



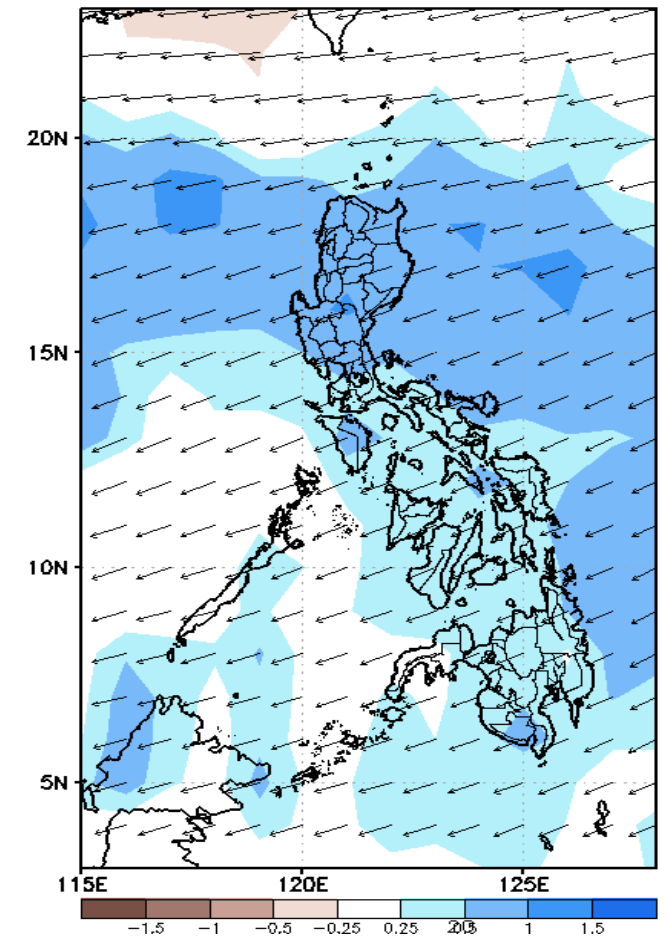
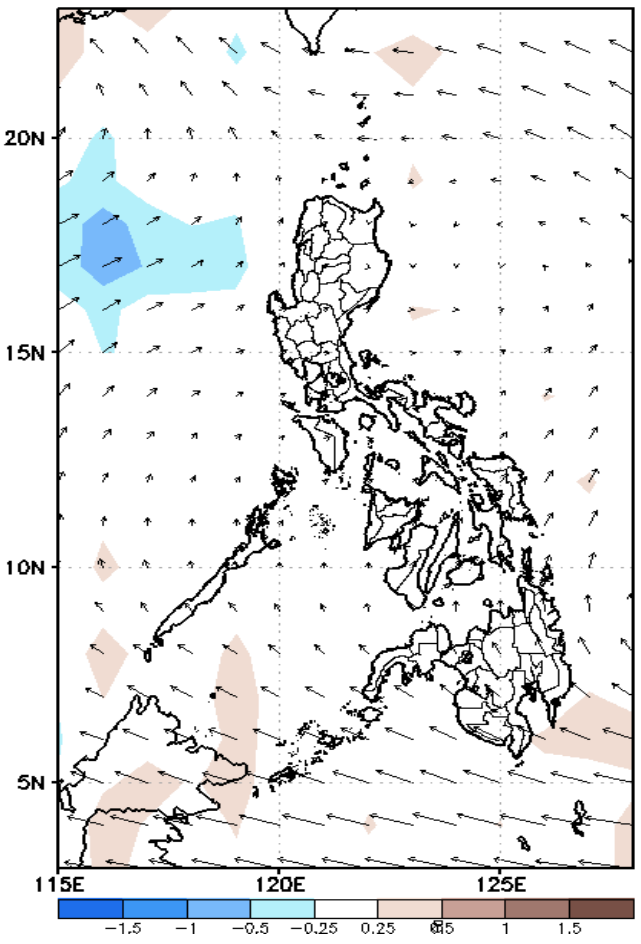
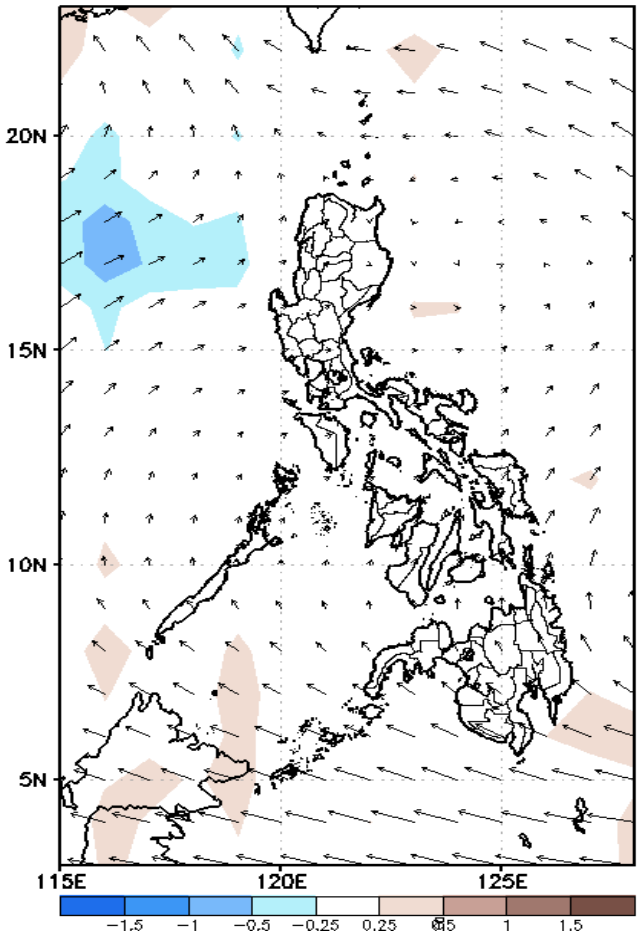
# Week 1 & Week 2 Forecast for the Philippines using GEFS Model



# GEFS Week-1 Forecasts: Wind Anomaly Forecast

Week 1: Aug 19-25, 2022

GEFS Week-1 850-hPa Divergence and Wind Anom  
Valid: 20220819 - 20220825  
GEFS Week-1 700-hPa Divergence and Wind Anom  
Valid: 20220819 - 20220825  
GEFS Week-1 200-hPa Divergence and Wind Anom  
Valid: 20220819 - 20220825

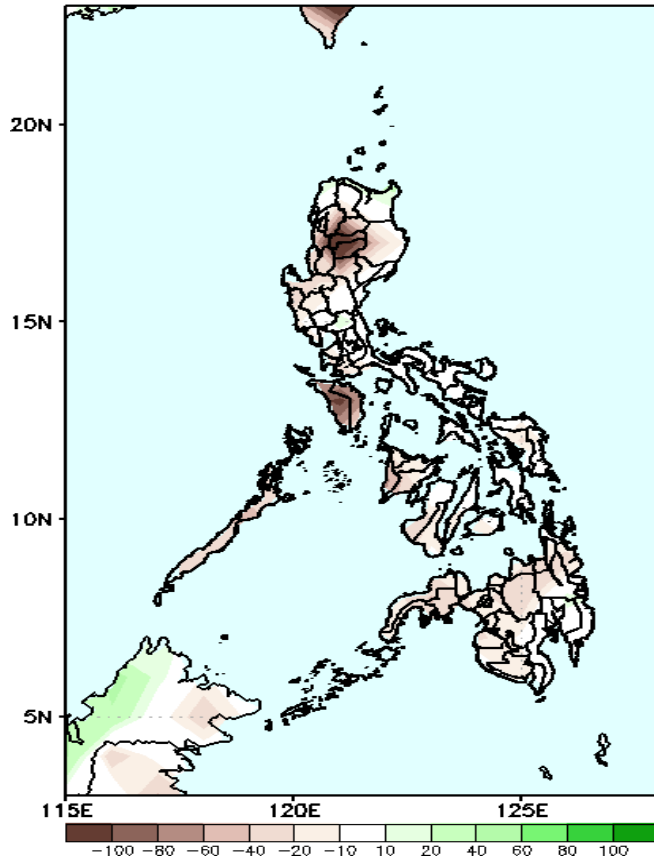


Southwest Monsoon affecting the western section of Northern Luzon while Easterlies affecting most parts of the country during the forecast period.

# Precipitation Anomaly and Exceedance Probability > 25/50 mm

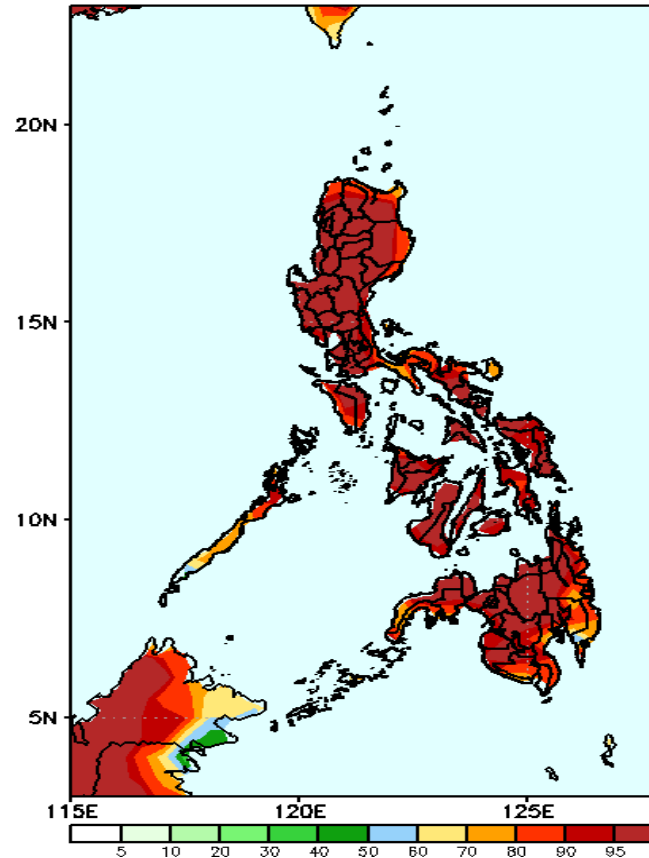
Week 1: Aug 19-25, 2022

GEFS Week-1 Precip Anomaly  
Valid: 20220819 - 20220825



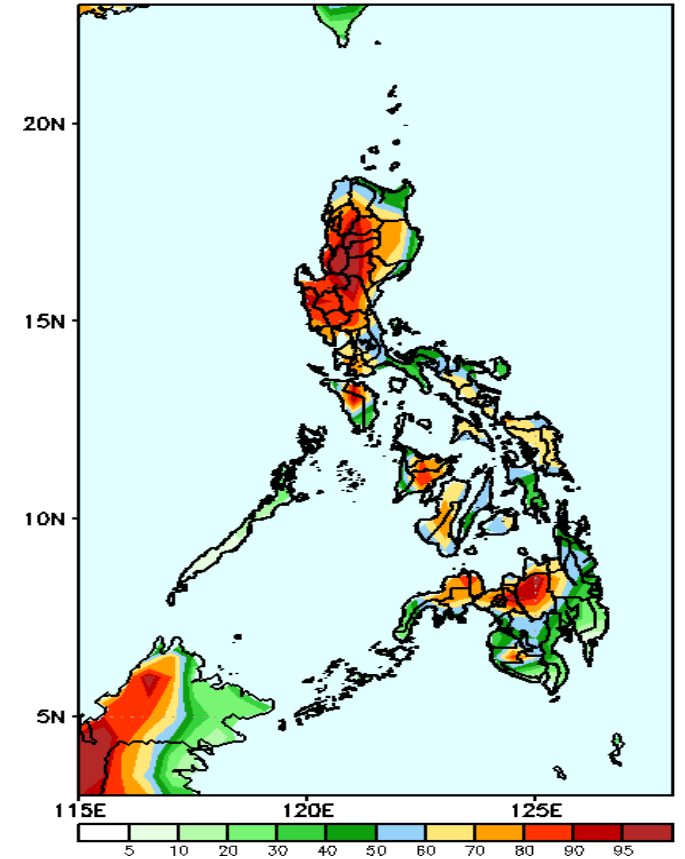
Rainfall deficit of more than 100mm is expected in Kalinga, Mt. Province, Ifugao and Mindoro and 10-40mm for the rest of the country during the forecast period.

GEFS Week-1 Exceedance Prob. > 25mm  
Valid: 20220819 - 20220825



High probability of rainfall to exceed 25mm in most parts of the country during the forecast period.

GEFS Week-1 Exceedance Prob. > 50mm  
Valid: 20220819 - 20220825

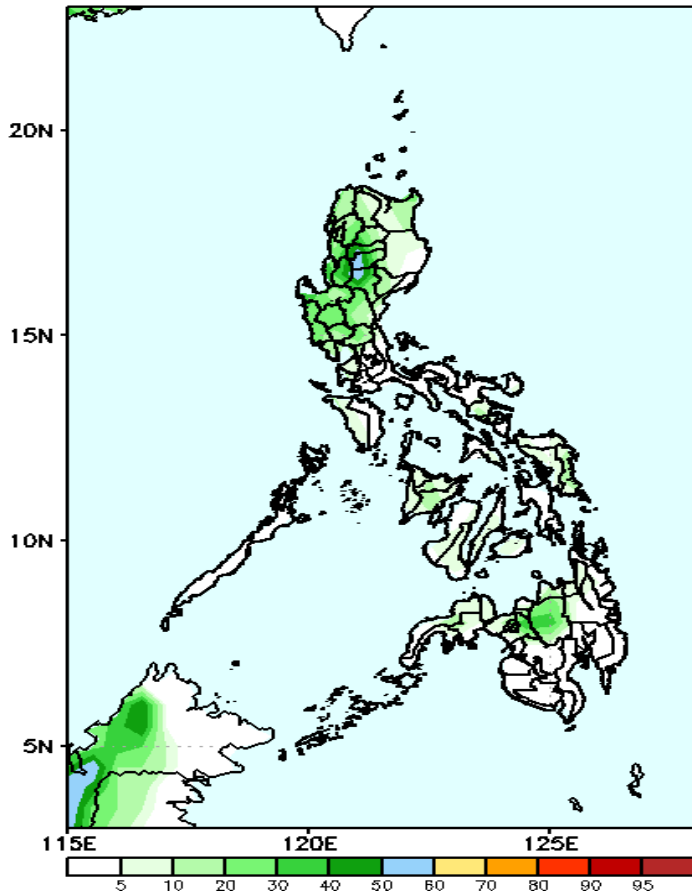


High probability of rainfall to exceed 50mm in most parts of Luzon (except most parts of Bicol region) and Bukidnon while less likely for the rest of the country during the forecast period.

# Exceedance Probability > 100/150/200 mm

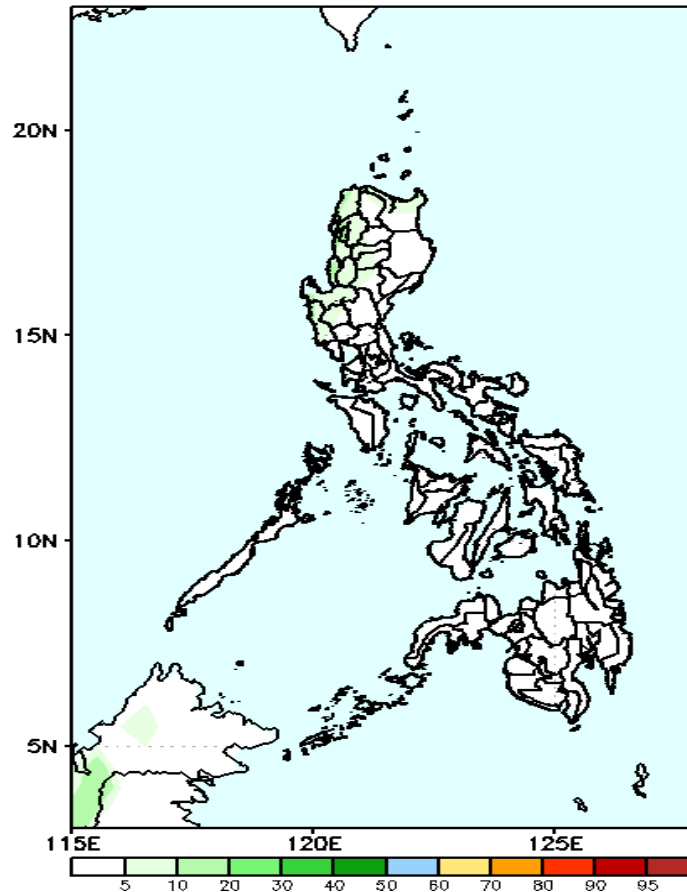
## Week 1: Aug 19-25, 2022

GEFS Week-1 Exceedance Prob. > 100mm  
Valid: 20220819 - 20220825



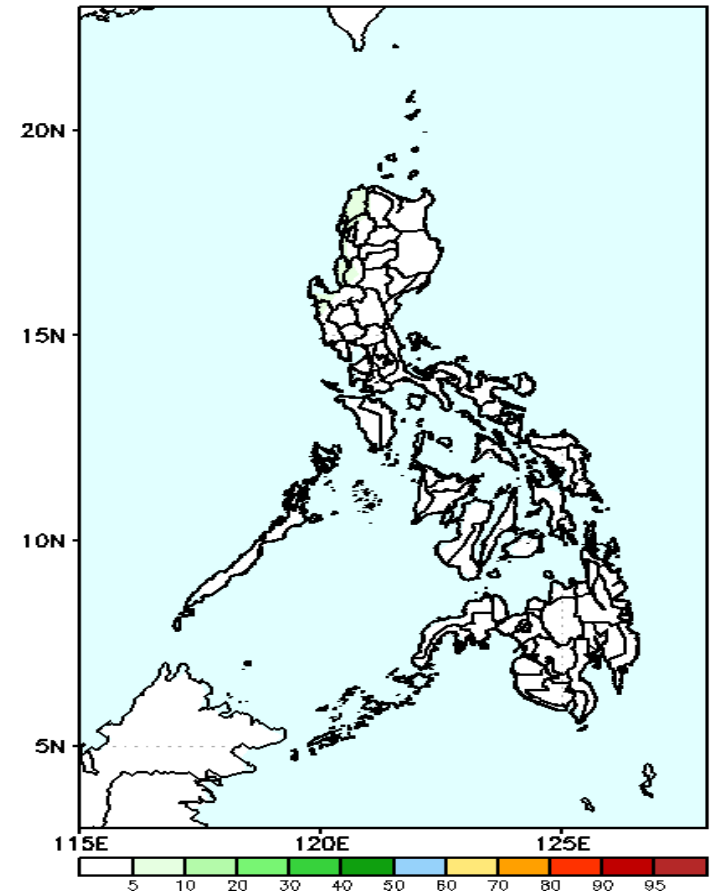
High probability of rainfall to exceed 100mm in most parts of Cordillera Region while less likely for the rest of the country during the forecast period.

GEFS Week-1 Exceedance Prob. > 150mm  
Valid: 20220819 - 20220825



Low probability of rainfall to exceed 150mm in most parts of the country during the forecast period.

GEFS Week-1 Exceedance Prob. > 200mm  
Valid: 20220819 - 20220825

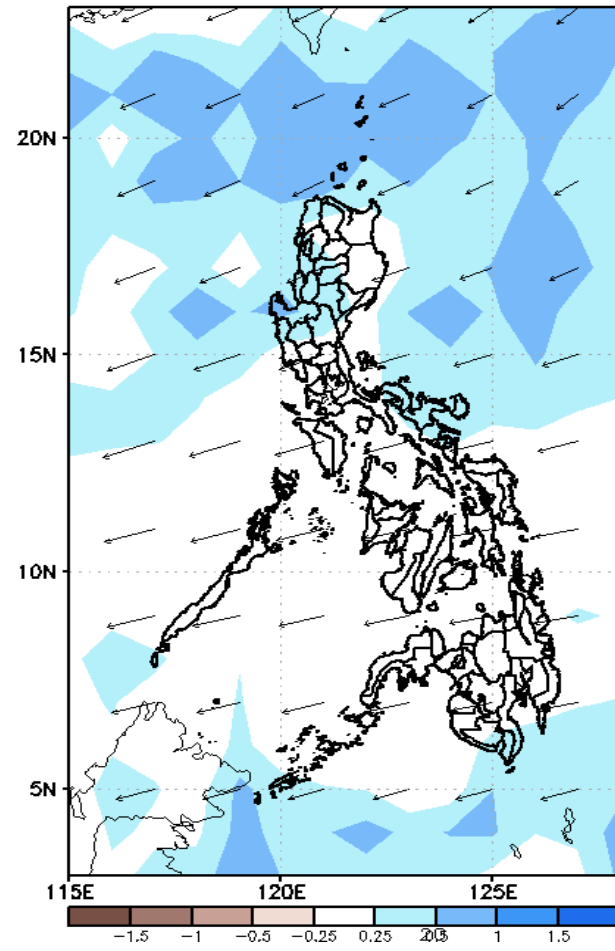
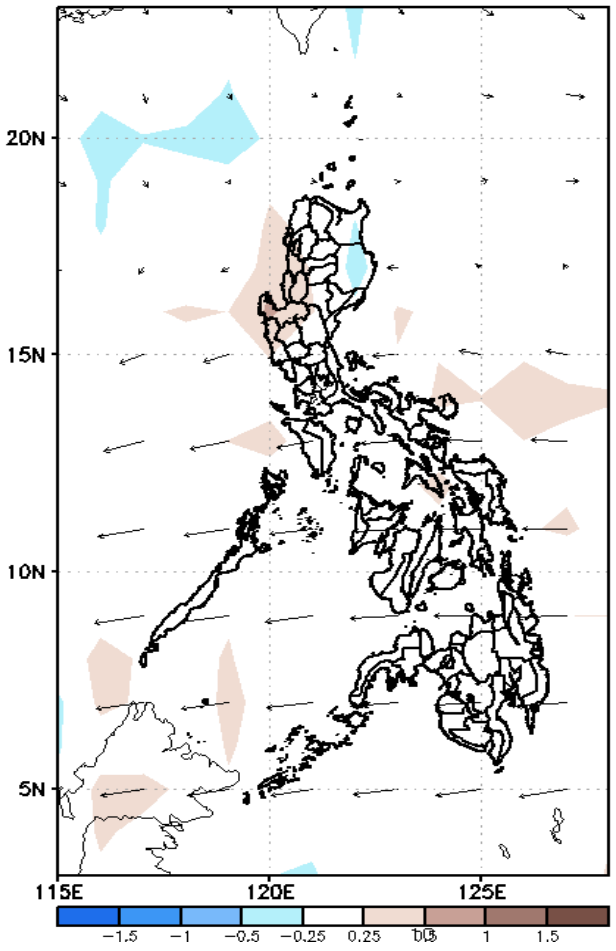
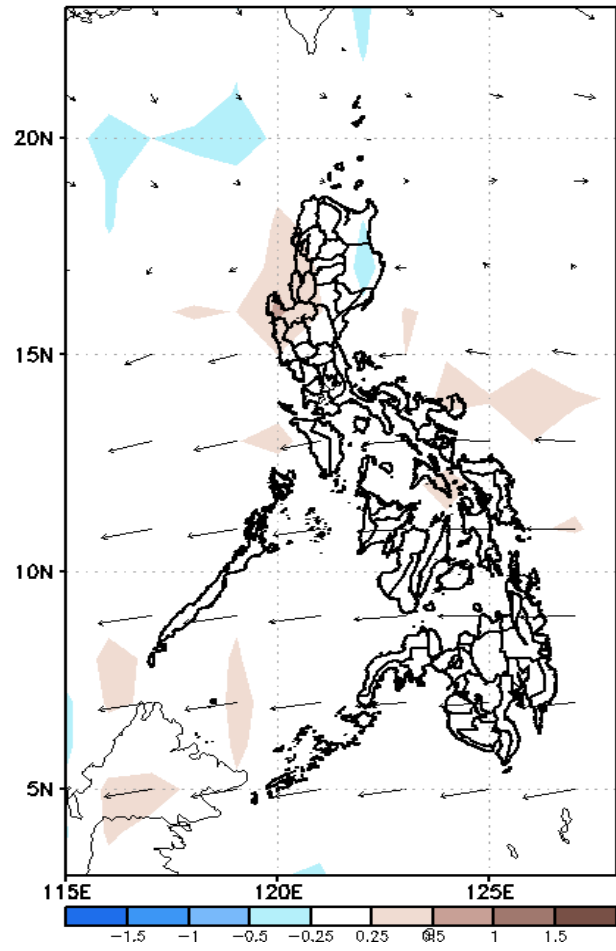


Low probability of rainfall to exceed 200mm in most parts of the country during the forecast period.

# GEFS Week-2 Forecasts: Wind Anomaly Forecast

Week 2: Aug 26- Sep 01, 2022

GEFS Week-2 850-hPa Divergence and Wind Anom  
Valid: 20220826 - 20220901  
GEFS Week-2 700-hPa Divergence and Wind Anom  
Valid: 20220826 - 20220901  
GEFS week-2 200-hPa Divergence and Wind Anom  
Valid: 20220826 - 20220901



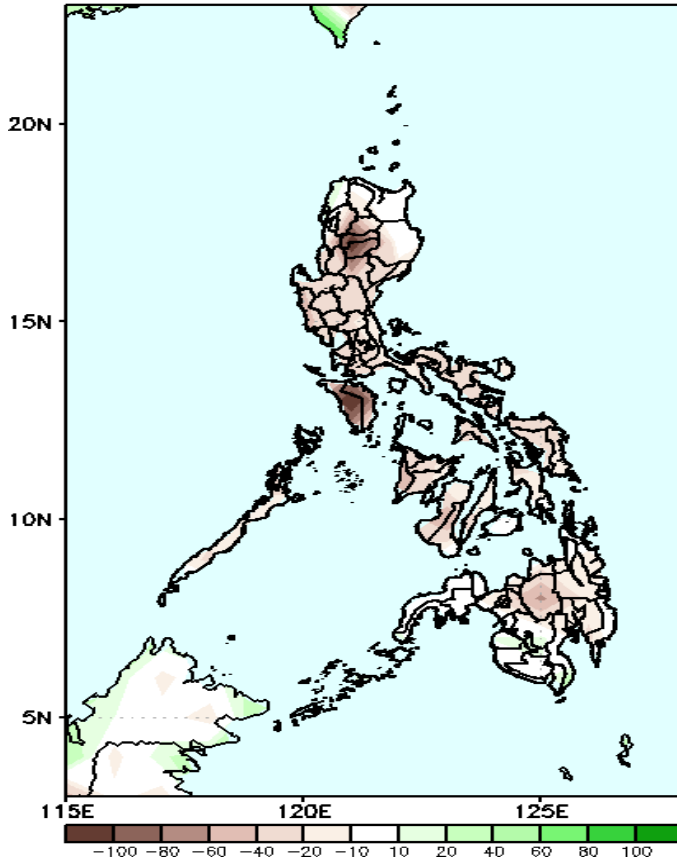
Southwest Monsoon affecting Northern and Extreme Northern Luzon while Easterlies affecting the rest of the country during the forecast period.



# Precipitation Anomaly and Exceedance Probability > 25/50 mm

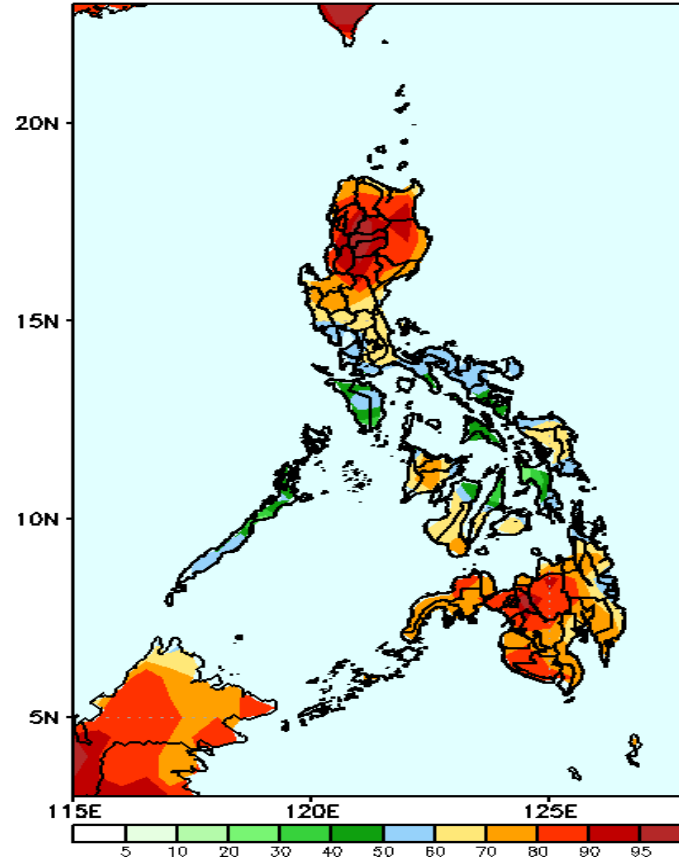
Week 2: Aug 26- Sep 01, 2022

GEFS Week-2 Precip Anomaly  
Valid: 20220826 - 20220901



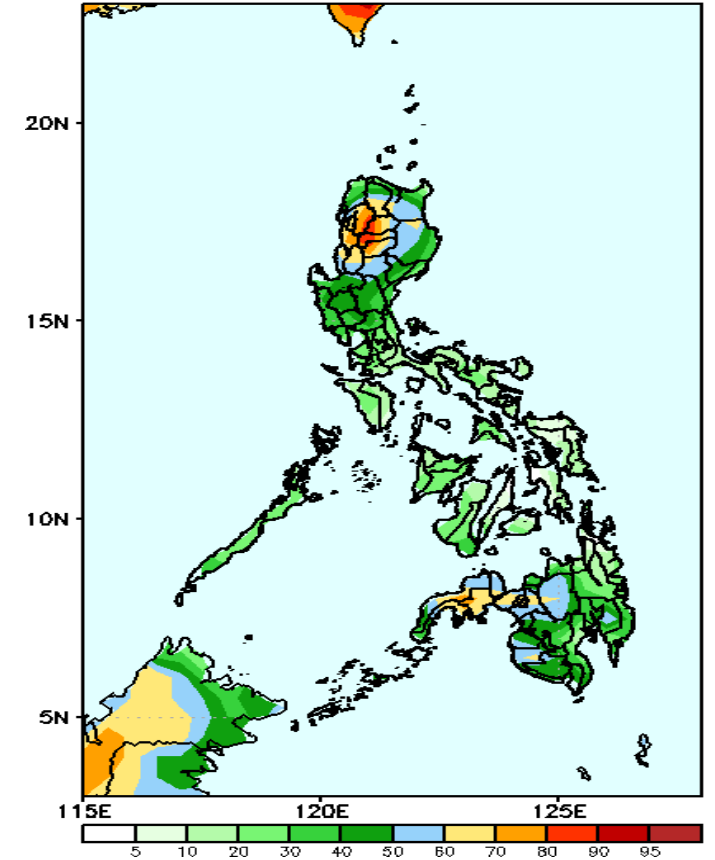
Rainfall deficit of more than 100mm is expected in Mt. Province, Ifugao and Mindoro and 10-40mm for the rest of the country during the forecast period.

GEFS Week-2 Exceedance Prob. > 25mm  
Valid: 20220826 - 20220901



High probability of rainfall to exceed 25mm in most parts of the country except in some areas in Southern Luzon and Visayas during the forecast period.

GEFS Week-2 Exceedance Prob. > 50mm  
Valid: 20220826 - 20220901



High probability of rainfall to exceed 50mm in most parts of CAR and Zamboanga Peninsula while less likely for the rest of the country during the forecast period.

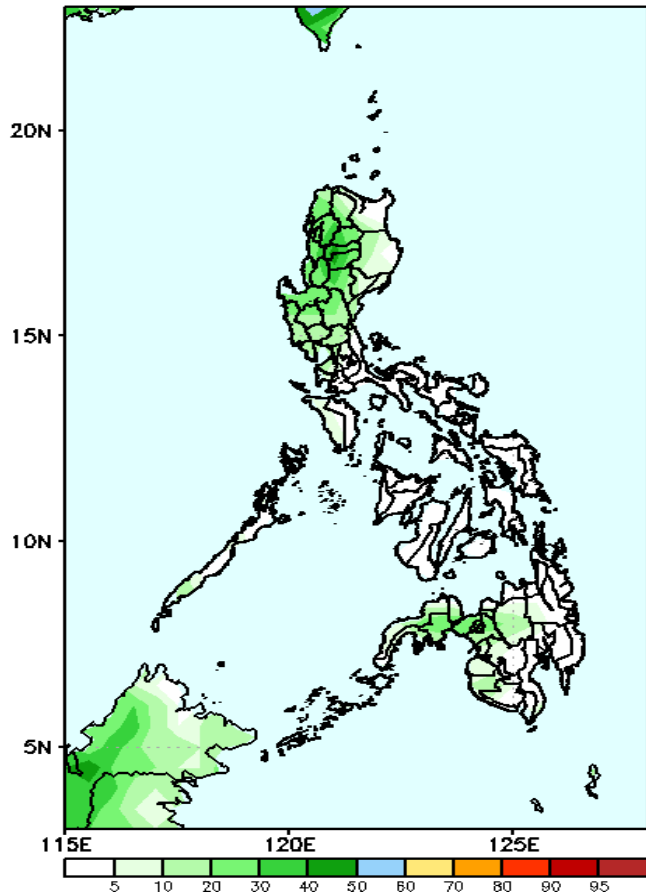




# Exceedance Probability > 100/150/200 mm

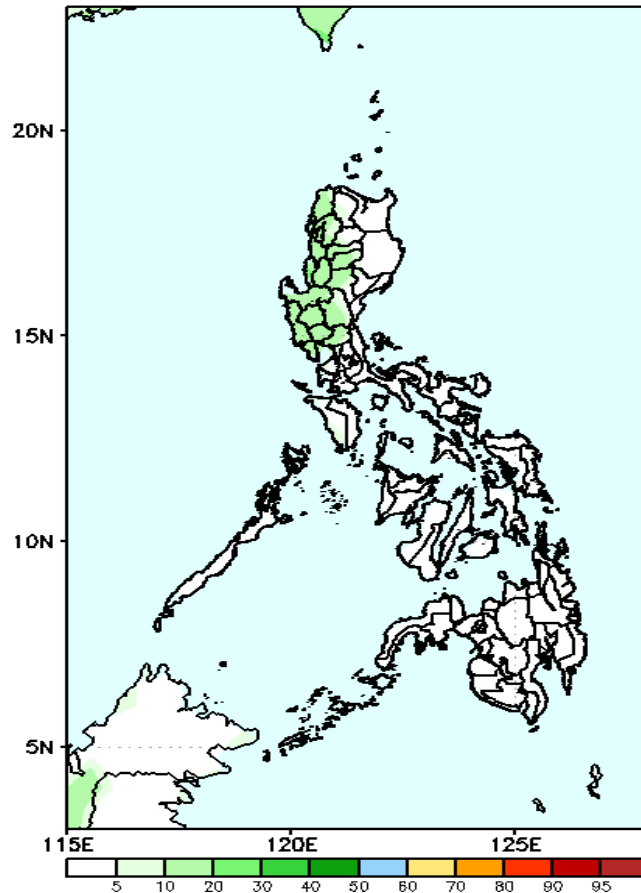
Week 2: Aug 26- Sep 01, 2022

GEFS Week-2 Exceedance Prob. > 100mm  
Valid: 20220826 - 20220901



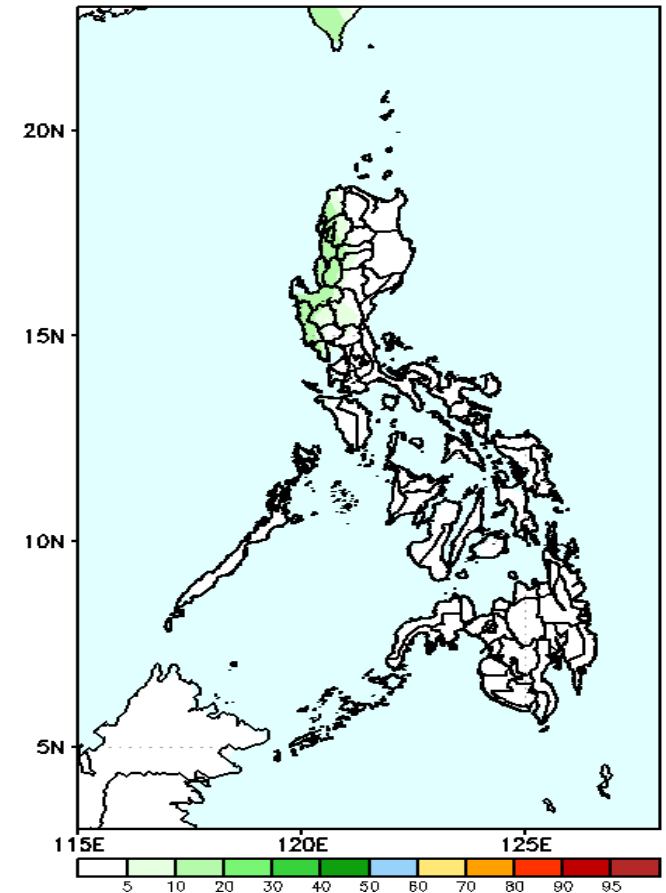
Low probability of rainfall to exceed 100mm in most parts of the country during the forecast period.

GEFS Week-2 Exceedance Prob. > 150mm  
Valid: 20220826 - 20220901



Low probability of rainfall to exceed 150mm in most parts of the country during the forecast period.

GEFS Week-2 Exceedance Prob. > 200mm  
Valid: 20220826 - 20220901

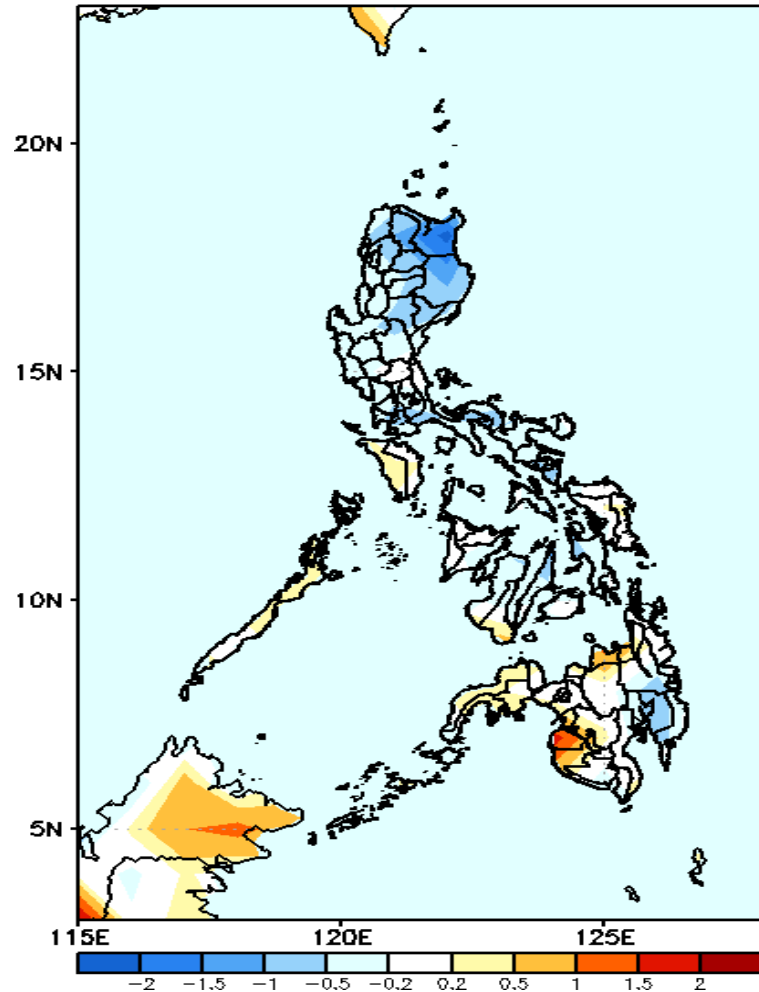


Low probability of rainfall to exceed 200mm in most parts of the country during the forecast period.



# GEFS Week-1 & 2 Forecasts: T2m Anomaly

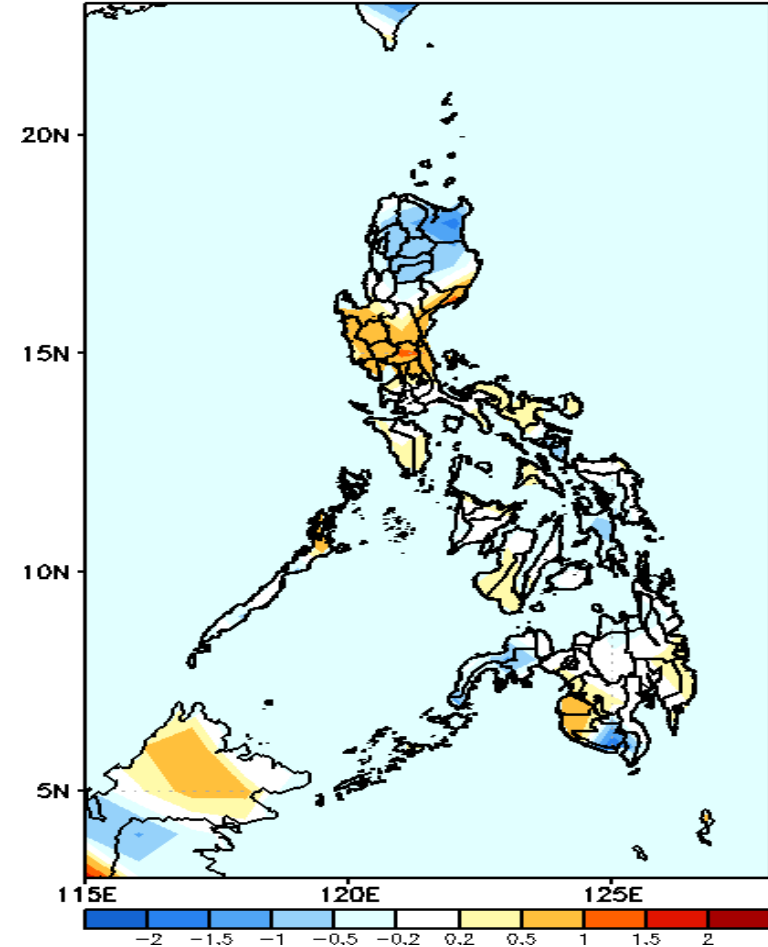
GEFS Week-1 T2m Anomaly  
Valid: 20220819 - 20220825



## 2m Temperature Week 1: Aug 19-25, 2022

Slightly cooler to cooler than average surface air temperature will likely experience in Northern Luzon, some areas in Southern Luzon and Davao Region, while warmer in Maguindanao and near to slightly warmer for the rest of the country during the forecast period.

GEFS Week-2 T2m Anomaly  
Valid: 20220826 - 20220901



## 2m Temperature Week 2: Aug 26- Sep 01, 2022

Warmer than average temperature will likely experience in most parts of Central Luzon, Maguindanao and Sultan Kudarat, near to slightly warmer in most parts of Visayas and Mindanao while slightly cooler in northern Luzon and South Cotabato during the forecast period.

